



Longhe Plastic Machinery Co.,LTD.



SINCE 1988

MANUFACTURERS SPECIALIZING IN FABRIC RECYCLING

Longhe Plastic Machinery is an integrated enterprise involved
in research, design, manufacturing, and sales.



Longhe Official Website / Scan QR code with phone



using video

PF STUDIO FABRIC CRUSHER

PF230B-1



PF180B-1



PF180C-2



PF180C-1



Technical parameters

model	shell material	material (mm)	motor (kw)	full-load noise	dust during operation	dimensions (L*W*H)mm	weight (kg)	packaging size (L*W*H)mm
PF180C-1	stainless steel	≤110*30	1.1	55 dB	dust reduction	720*512*908	140	740*522*928
PF180C-2					dust collection	720*715*908	160	740*725*928
PF180B-1	steel plate	≤80*20	2.2	70 dB	yes	690*470*1000	129	720*505*1100
PF230B-1			4			870*620*1190	241	1000*645*1320

○ Product introduction

- 1 Reduce fabric waste volume by up to **90%**, **Sound-insulated and noise-reduced crushing.**
- 2 **PF180C-2** the fabric dust collection crusher is highly suitable **for use in cleanrooms.**

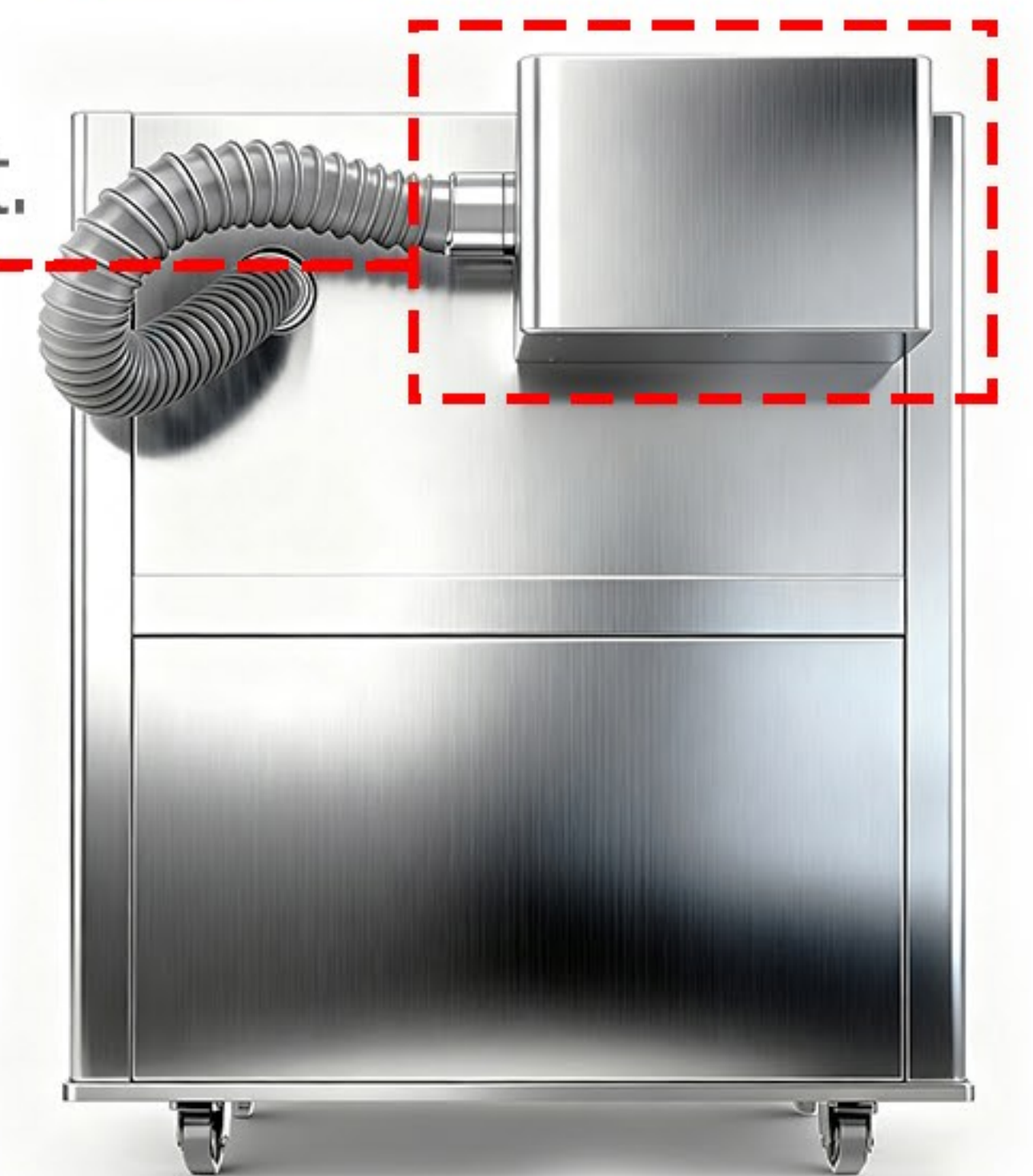


- 3 **PF180C-2** the **dust collection device** can efficiently filter dry, wet, and sticky dust.

- 4 **PF180C feed inlet design:** Prevent jams and material splashing back, ensuring worry-free and safe crushing.

- 5 **Output size adjustment:** Easily changed via mesh screens.

- 6 The shredded fabric can be **100% reprocessed into new fabric products.**



stuffing
plush toys



stuffing pillows



stuffing sofas



recycled paper



stuffing crafts



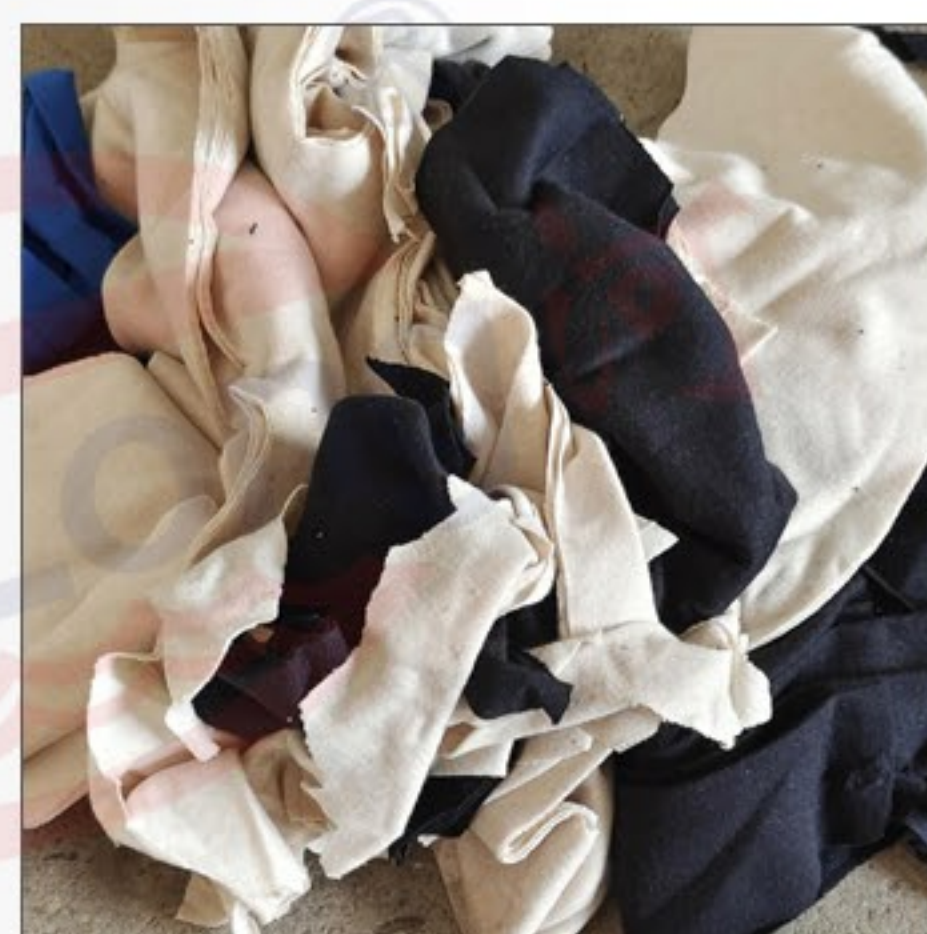
quilt filling

○ Applications

Suitable for recycling and reusing shredded fabric.



Loophole



single jersey



clothing scraps



air cool



red fabric



cataionic





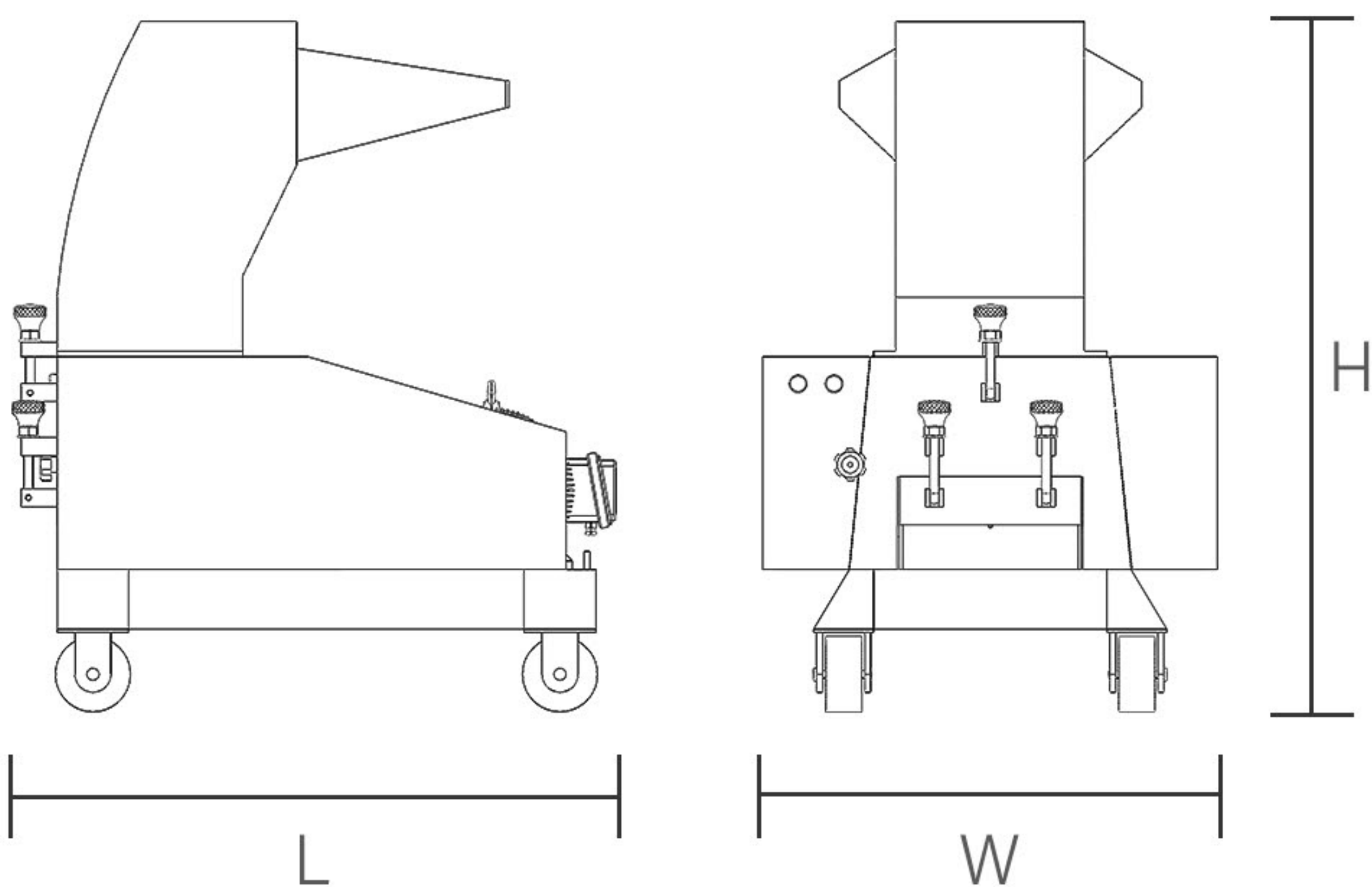
using video

PF MODEL FABRIC SHREDDER/CRUSHER

Can be used in conjunction with a **dust collector**



SCHEMATIC DIAGRAM



Technical parameters

model	crushing diameter (mm)	crushing capacity (kg/h)	power (kw)	blade (pieces)	dimensions (L*W*H)mm	weight (kg)	packaging size (L*W*H)mm
PF300B-1	310*245	50-80	5.5	5	1000*760*1200	350	1090*790*1320
PF400B-1	410*260	100-250	7.5	8	950*860*1300	425	970*880*1320
PF500B-1	510*285	150-350	11	10	1110*970*1450	580	1120*990*1470
PF600B-1	610*285	180-400	15	10	1080*1380*1475	640	1190*1550*1600

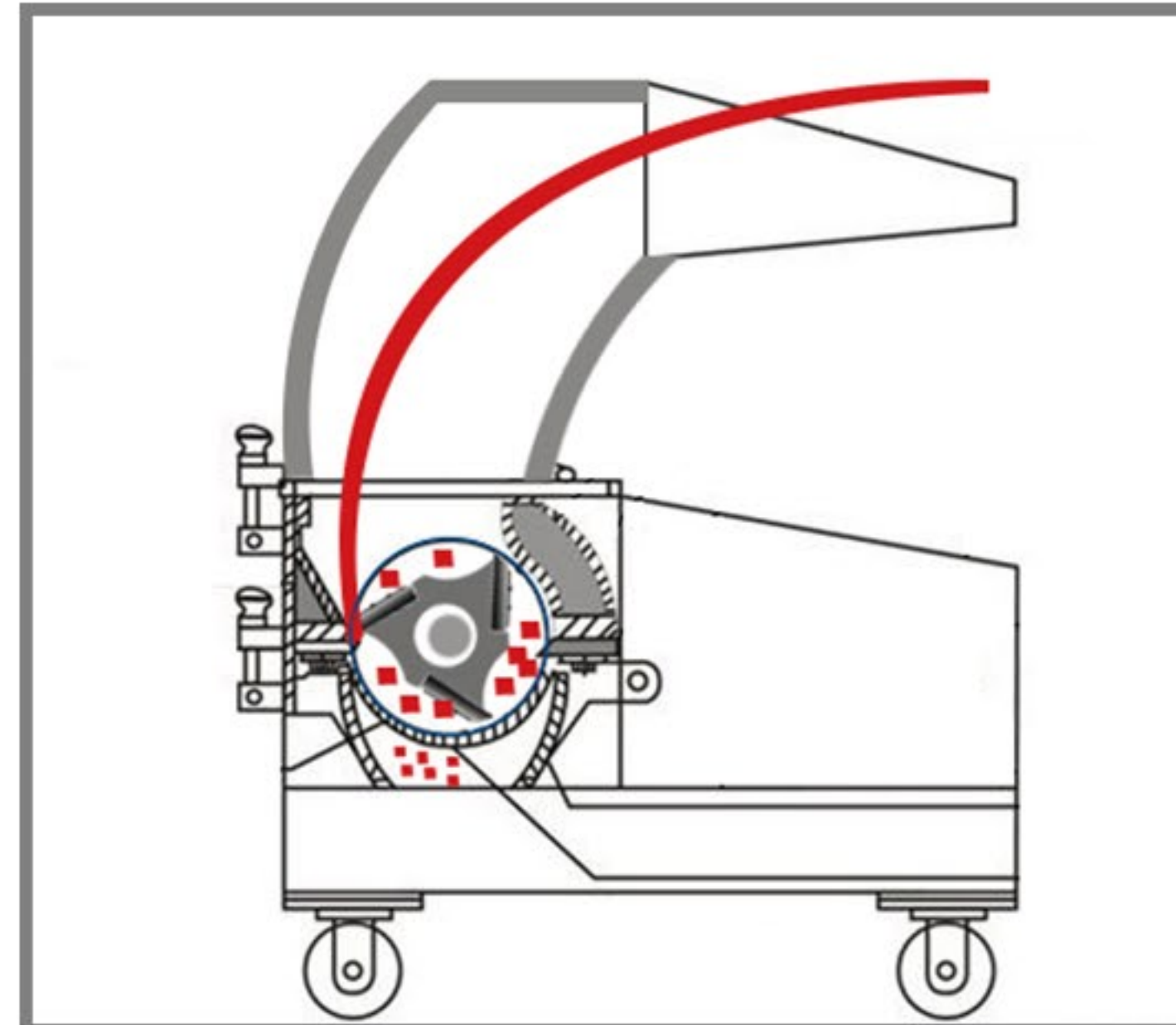
Product introduction

1 Single-piece sharp blade for quick cutting:

No tangling, no accumulation, no jamming, rapidly crushes lightweight materials.

2 Exclusive machine body design:

Material drop path and blade cutting path are highly compatible.



3 The large diameter of the crushing chamber: Reduces the risk of jamming, resulting in an average lifespan of 15 years.

4 Triple protection mechanism: Sealed processing, special discharge outlets, and confidential design extend the lifespan by 5-10 years.

5 Machine structure: Fully welded with reinforced screen mesh frames, increasing pressure resistance by 80%.

6 Bearing and oil sealing device: Heavy-duty bearings and efficient oil sealing ensure stable operation.

7 Multi-layer soundproofing: Triple-layer sound-absorbing materials reduce vibrations and noise by 30%.

8 Safety device: Ensures mechanical injury prevention, increasing safety by 50%.

9 Blade adjustment: Adjustable and retractable, can be sharpened multiple times, ensuring a long lifespan.

Applications

Suitable for recycling and reusing shredded fabric.



jeans



single jersey



mugmog



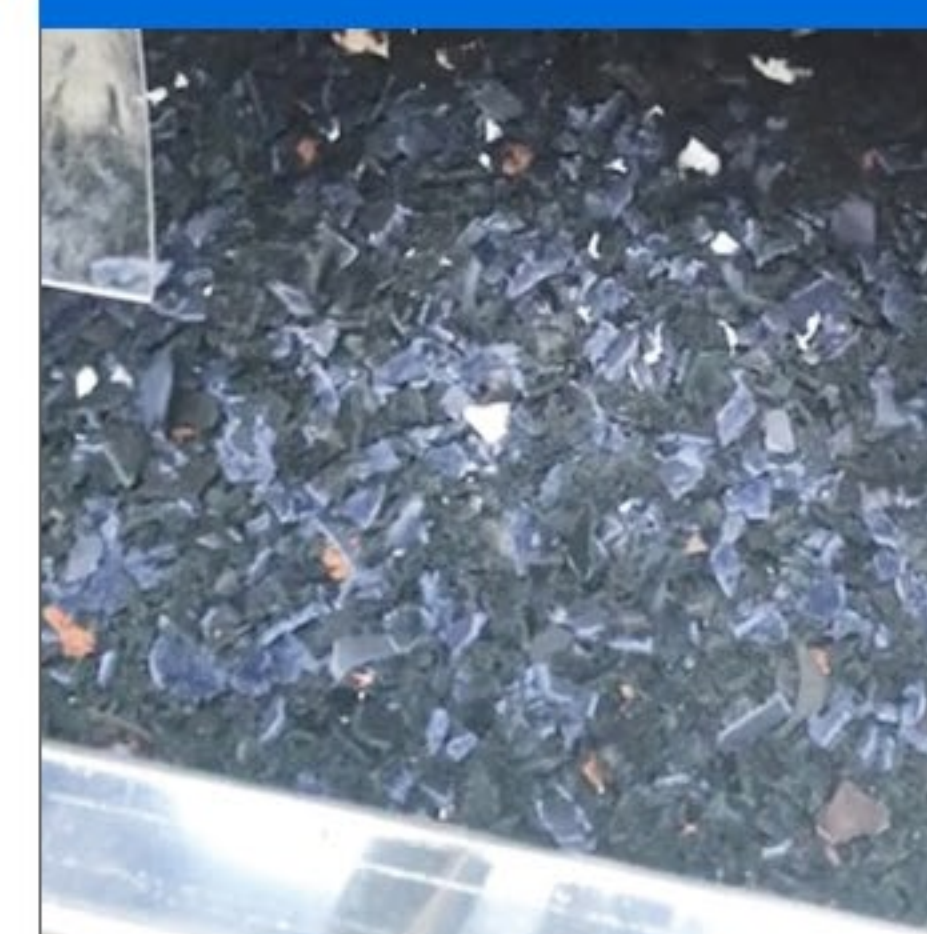
air cool



leather materials



cataionic

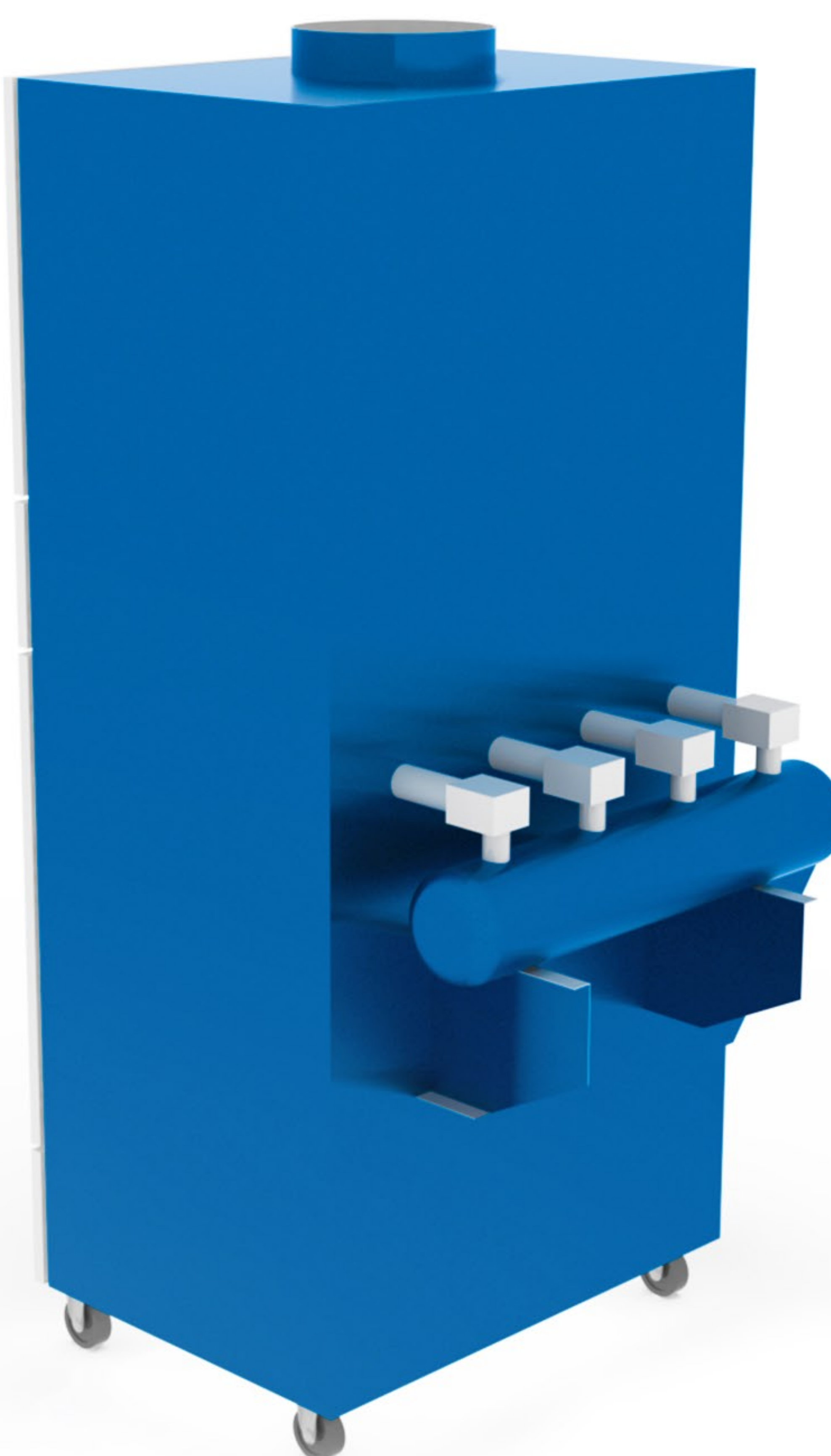




using video

DUST COLLECTOR

Our dust collection system pairs seamlessly with any crusher!



○ Functional Introduction

The dust generated during enterprise production affects both the environment and the health of workers. Our company has developed a pulsed dust collection system specifically designed for crushers, which incorporates dual core technologies of high-efficiency filtration and intelligent reverse blowing. It is lightweight, flexible, and easy to operate, widely applicable across multiple industries and locations with dust and smoke pollution, effectively purifying smoke and waste gases through multi-stage filtration without causing secondary pollution.

Fully Enclosed Sound Insulation and Noise Reduction
—— Pulsed Dust Collection System Specifically for Crushers

○ Equipment Features

- 1** Equipped with a **dedicated turbo blower and a branded motor**, the system incorporates an overload protection circuit to prevent motor burnout, ensuring high safety and stable working performance.
- 2** **Intelligent automatic dust cleaning:** The pulse system automatically cleans the filter cartridges at regular intervals, ensuring a more thorough and clean removal of dust from the filter surface, thereby maintaining a constant suction capacity for the dust collector.
- 3** **The filter cartridges are made of imported materials, offering a long service life.** They can capture dust particles as small as 0.3um and provide excellent filtration for wet and sticky dust.
- 4** The purifier incorporates three layers of protective measures against fire hazards and large particle slag inside, enhancing the longevity, safety, and reliability of the purifier.
- 5** Clean air is evenly guided and dispersed through the grille-shaped exhaust outlet, minimizing noise levels.

○ Customer Case (The dust collection system models are customized to match specific crusher models)



PF400 Fabric Crusher Dust Removal System



PY800 Plastic Bottle Shredder Dust Collection System



KTS400 Intelligent Crusher Dust Collection System

○ Applications

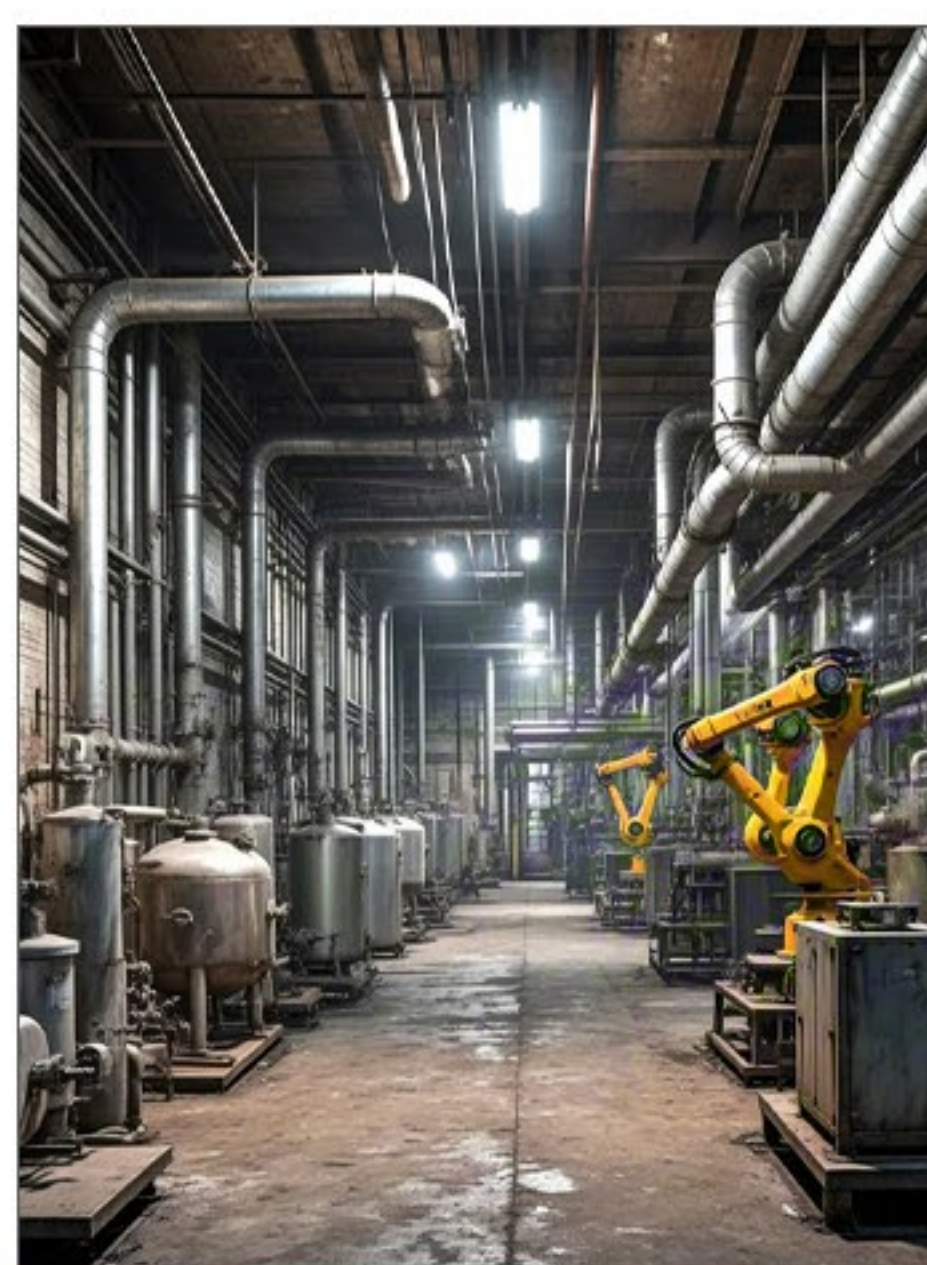
It is also widely applied in industries such as chemicals, metal processing, tobacco, glass, pharmaceuticals, food processing, cleanrooms, hospitals, as well as other places with dust and smoke pollution.



tobacco factory



food processing workshop



petrochemical plant



metal processing



hospital laboratory



light industry



GLOBAL AFTER-SALES SERVICE FOR PLASTIC EQUIPMENT

maintenance / debugging / installation /
upkeep / parts supply / technical training

Choosing Longhe Machinery, you not only get high-quality plastic equipment but also benefit from our professional technical support and attentive after-sales service

龙河塑机
Chaozhou Longhe Plastic
Machinery Co., Ltd.

COOPERATION • MUTUAL BENEFIT • INNOVATION • DEVELOPMENT

Add: Longsha Industrial Zone Jinshi Chaozhou Guangdong


www.cnhlong.com

www.hlongcrusher.com

E-mail: cnhlong@cnhlong.com

 Search: "LONGHE-plastic machine"

 Search: "@longhe_Plastic_machinery"

  Tel: +86 18925132464